



CATALOGUE

2014

TTAAF-double stage split casing centrifugal pump



PRODUCT BROCHURE

TORONTECH
PUMPS

TORONTECH.COM



Torontech™ is a leading North American based international manufacturer and supplier of pumps, pipes, valves & actuators. The Torontech™ group has established an extensive network in the USA as well as international markets and remains to be a preferred vendor of choice supplying quality pumps for today's leading corporations.

Creating comprehensive solutions for our clients has always been the core value of our company. From sales, to order execution, and post-sales support; every staff member is here to assist you in selecting the solution that best suits your unique requirements and budget.

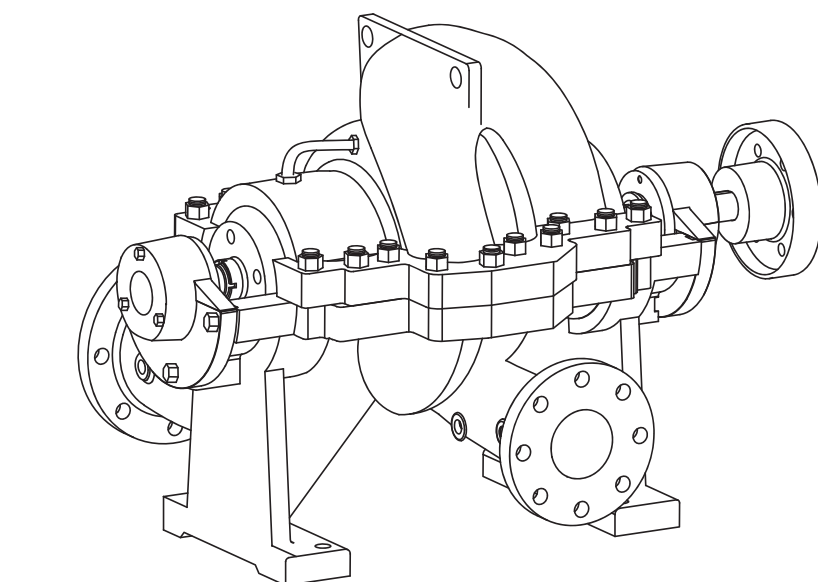
The Torontech™ group offers a complete range of quality pumps that are, ANSI to ISO approved and engineered to last, ensuring your company continuous production without interruptions.

Since the beginning, we have succeeded in only offering quality manufactured pumps that are currently being used worldwide. We offer the best value for your investment and provide world-class support.

Due to the demand for our quality pumps, Torontech™ has experience explosive growth primarily in the oil & gas, water filtration and chemical refinery industries.

We offer an extensive range of solutions and products for oil & gas projects, refineries, petrochemical plants, and marine applications. Our main class of pumps includes API (American Petroleum Institute) Standard, Mining, Water & Sewage and Firefighting applications. The pumps are offered in various configurations depending on orientation of the pump, required head and type of fuel used for operation.

TTAAF-double stage split casing centrifugal pump



TTAAF- OTK 100 290 A L R MS/GP

MS: Mechanical Seal
GP: Gland Packing
R : Hot Water
L: Vertical Constructure
Impeller is trimmed one time
Diamter of Impeller (mm)
Outlet of pump (mm)
HS split casing pumps

General Description:

- The technical parameter of type OTK pumps:
- DN: 65~700mm
- Q: 60~10000m³/h
- H: 7~360m
- T: -20℃~105℃
-60℃~200℃
- Solid Contains ≤80mg/L
- Working Pressure ≤2.5Mpa Max: ≤5Mpa
- Flange std: DIN, ANSI, BS, JIS, GB

Casing

- Ductile Cast Iron
- Ni-resistant cast iron
- Cast Steel
- AISI304
- AISI316
- AISI316L
- Duplex stainless steel

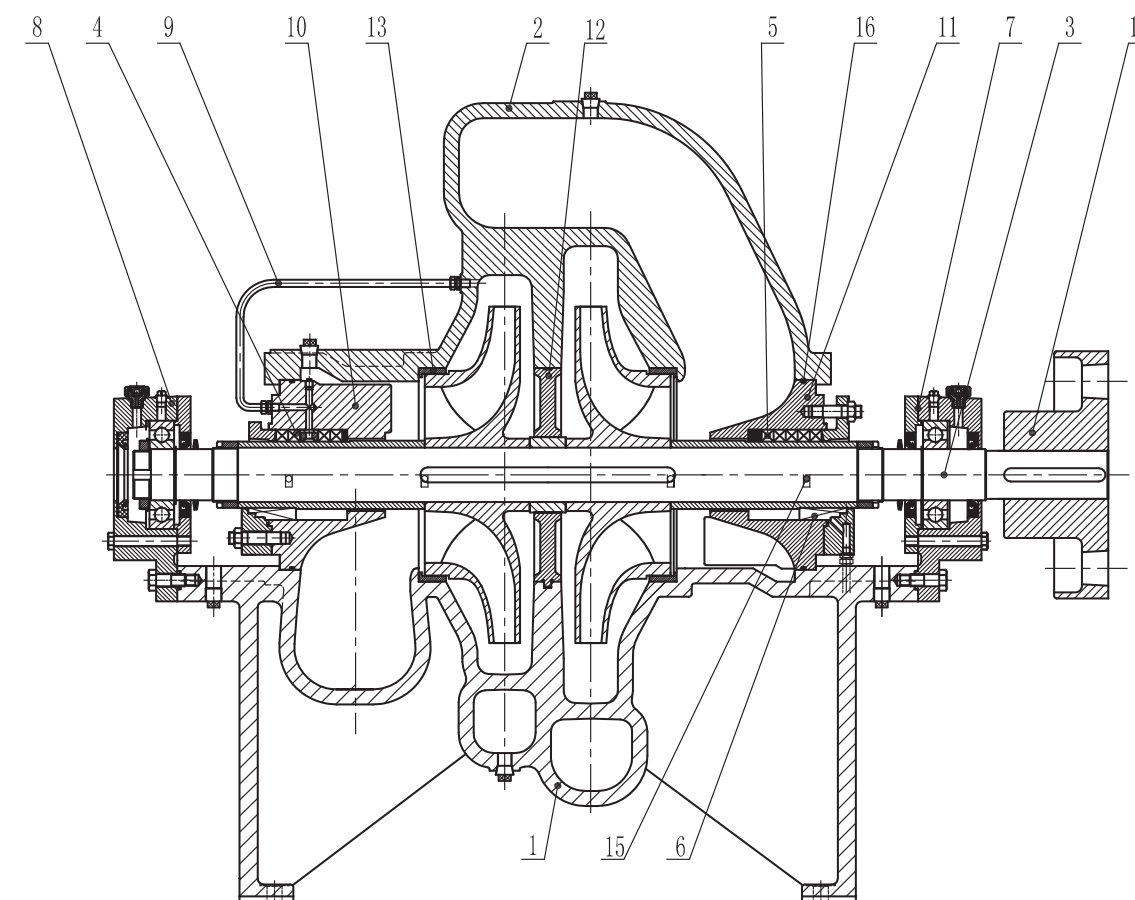
Impeller

- Cast Iron
- Ductile Cast Iron
- Ni-resistant cast iron
- Cast Steel
- Bronze
- AISI304
- AISI316
- AISI316L
- Duplex stainless steel

Shaft

- Carbon steel ASTM1045
- AISI304
- AISI316
- AISI316L
- Duplex Stainless steel

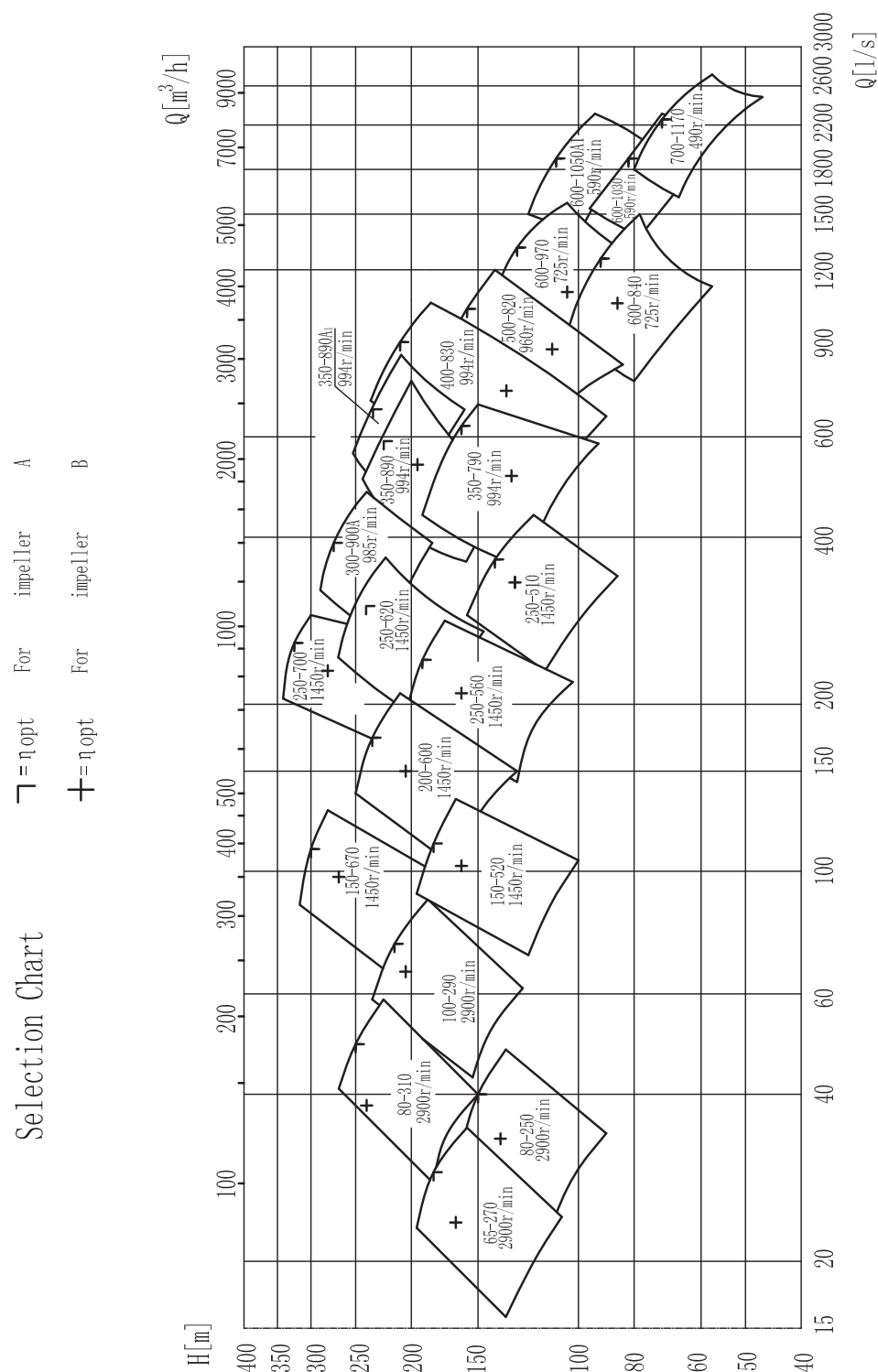
CONSTRUCTION DETAIL



1	Pump Casing
2	Pump Cover
3	Rotor parts
4	First-stage filler sealing parts
5	Second-stage filler sealing parts
6	Mechanical seal parts
7	Rolling bearing parts
8	Rolling bearing parts
9	Flushing pipe parts

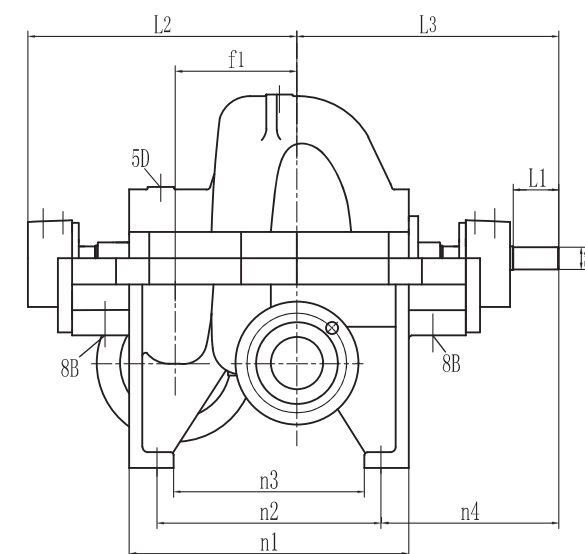
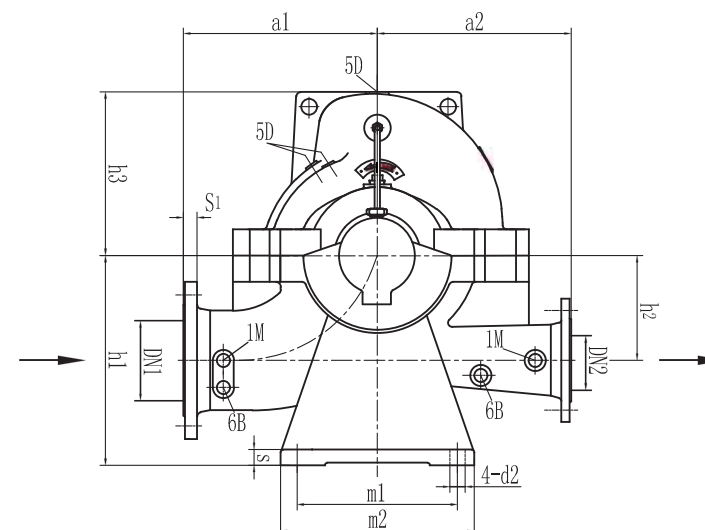
10	First-stage shaft seal housing
11	Second-stage shaft seal housing
12	Intermediate partition
13	Wearing ring
14	Flexible coupling
15	Pin
16	"O"ring

TTAAF family Curve



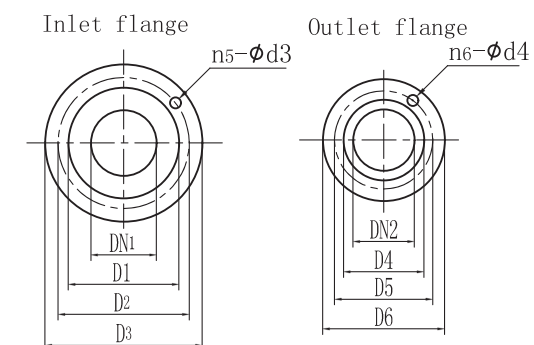
QUTLINE DIMENSIONS

Dimensions



Thread connection dimensions

1M Pressure gauge $G\frac{1}{2}"$
5D Air vent $G\frac{1}{2}"$
6B Liquid drain $G\frac{1}{2}" / G\frac{3}{4}"$
8B Leakage liuduid drain $G\frac{3}{4}"$





TORONTECH™

Pumps and Valves

TTAAF



TORONTECH™

Torontech™ – North America
TEL: +1 (416) 368-2721
FAX: +1 (416) 981-7652
E-MAIL: sales@Torontech.com
WEBSITE: www.Torontech.com

Please contact us for your nearest local office or distributor

Torontech Inc. - Canada
North American Headquarters
Tel: +1.416.368.2721
Fax: +1.416.981.7652
Email: sales@torontech.com
www.Torontech.com

Torontech Inc. - Canada
North American Headquarters
Tel: +1.416.368.2721
Fax: +1.416.981.7652
Email: sales@torontech.com
www.Torontech.com