



CATALOGUE

2014

TTAAB-Series of Pulp Pumps (ISO)



PRODUCT BROCHURE

TORONTECH
PUMPS

TORONTECH.COM



Torontech™ is a leading North American based international manufacturer and supplier of pumps, pipes, valves & actuators. The Torontech™ group has established an extensive network in the USA as well as international markets and remains to be a preferred vendor of choice supplying quality pumps for today's leading corporations.

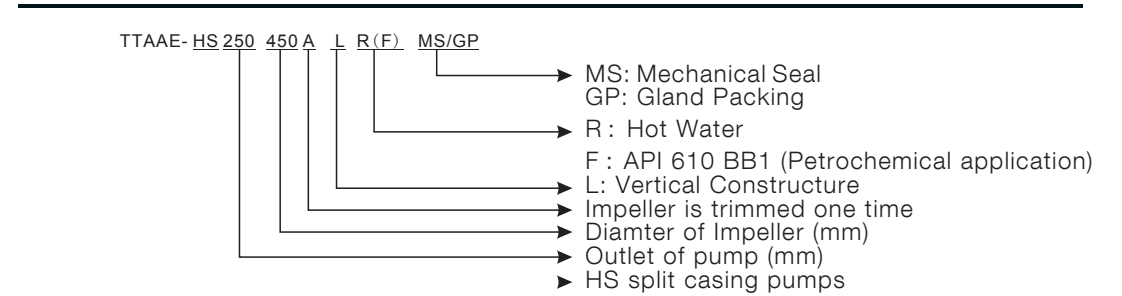
Creating comprehensive solutions for our clients has always been the core value of our company. From sales, to order execution, and post-sales support; every staff member is here to assist you in selecting the solution that best suits your unique requirements and budget.

The Torontech™ group offers a complete range of quality pumps that are, ANSI to ISO approved and engineered to last, ensuring your company continuous production without interruptions.

Since the beginning, we have succeeded in only offering quality manufactured pumps that are currently being used worldwide. We offer the best value for your investment and provide world-class support.

Due to the demand for our quality pumps, Torontech™ has experience explosive growth primarily in the oil & gas, water filtration and chemical refinery industries.

We offer an extensive range of solutions and products for oil & gas projects, refineries, petrochemical plants, and marine applications. Our main class of pumps includes API (American Petroleum Institute) Standard, Mining, Water & Sewage and Firefighting applications. The pumps are offered in various configurations depending on orientation of the pump, required head and type of fuel used for operation.



General Description:

HS pumps are new type of single stage double suction centrifugal split pumps with high performance. They are widely used in delivering liquids to the water plant, circulation water system of air-conditioners, supplying heated water, construction, drainage pumping station, power station, industrial water supply system, marine, mine and etc.

The technical parameter of type HS pumps:

DN: 80~1400mm

Q: 22~25200m3/h

H: 7~280m

T: -20°C~105°C

-60°C~200°C

Solid Contains ≤ 80mg/L

Working Pressure ≤2.5Mpa ≤4Mpa

Flange std: DIN,ANSI, BS,JIS, GB

High Efficiency and low pulsation

Stable service and low maintenance

Heavy duty design and long life span

Options for CW/CCW rotation

Fine production and shortest down time

HS is the horizontal single stage axial split casing centrifugal pump with double suction impeller.

The casing is axially split, so it allows maintaining the pump without dismantling the pump from the whole water system.

It has reasonable compact structure and can rotate clockwise or anti-clockwise to meet the different site conditions.

The shaft is sealed by reliable mechanical seal or gland packing according to different applications, the bearing can be lubricated by grease or thin oil.

HS pump is an excellent split casing pump that is widely used in large amount water transportation, water lifting, fire fighting, offshore, mining industries.

Casing

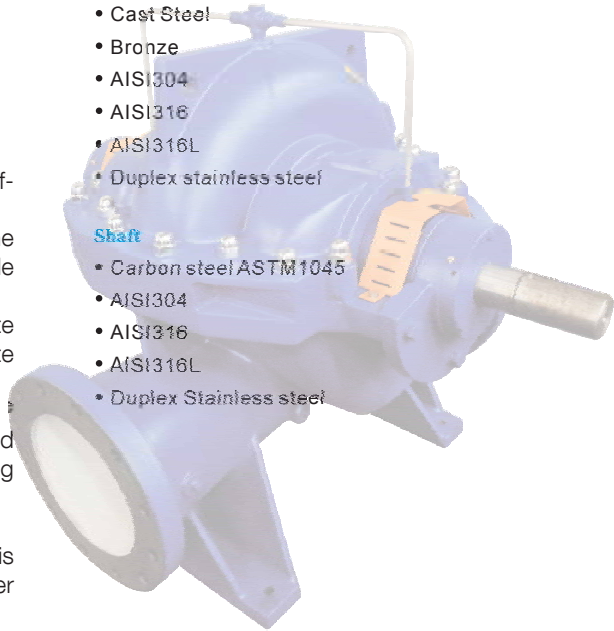
- Cast Iron
 - Ductile Cast Iron
 - Ni-resistant cast iron
 - Cast Steel
 - AISI304
 - AISI316
 - AISI316L
 - Duplex stainless steel

Impeller

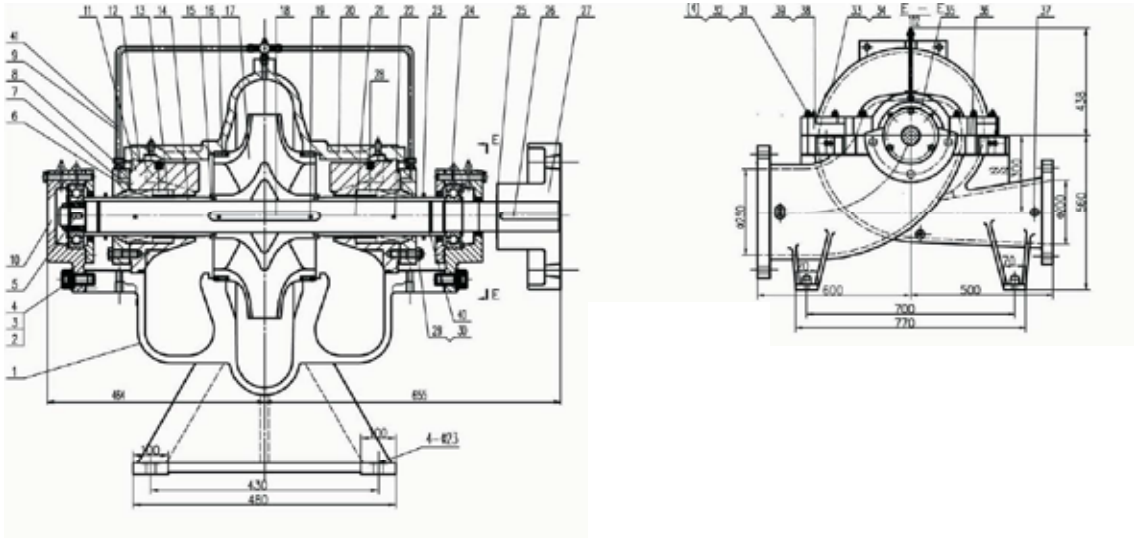
- Cast Iron
 - Ductile Cast Iron
 - Ni-resistant cast iron
 - Cast Steel
 - Bronze
 - AISI304
 - AISI316
 - AISI316L
 - Duplex stainless steel

Shaft

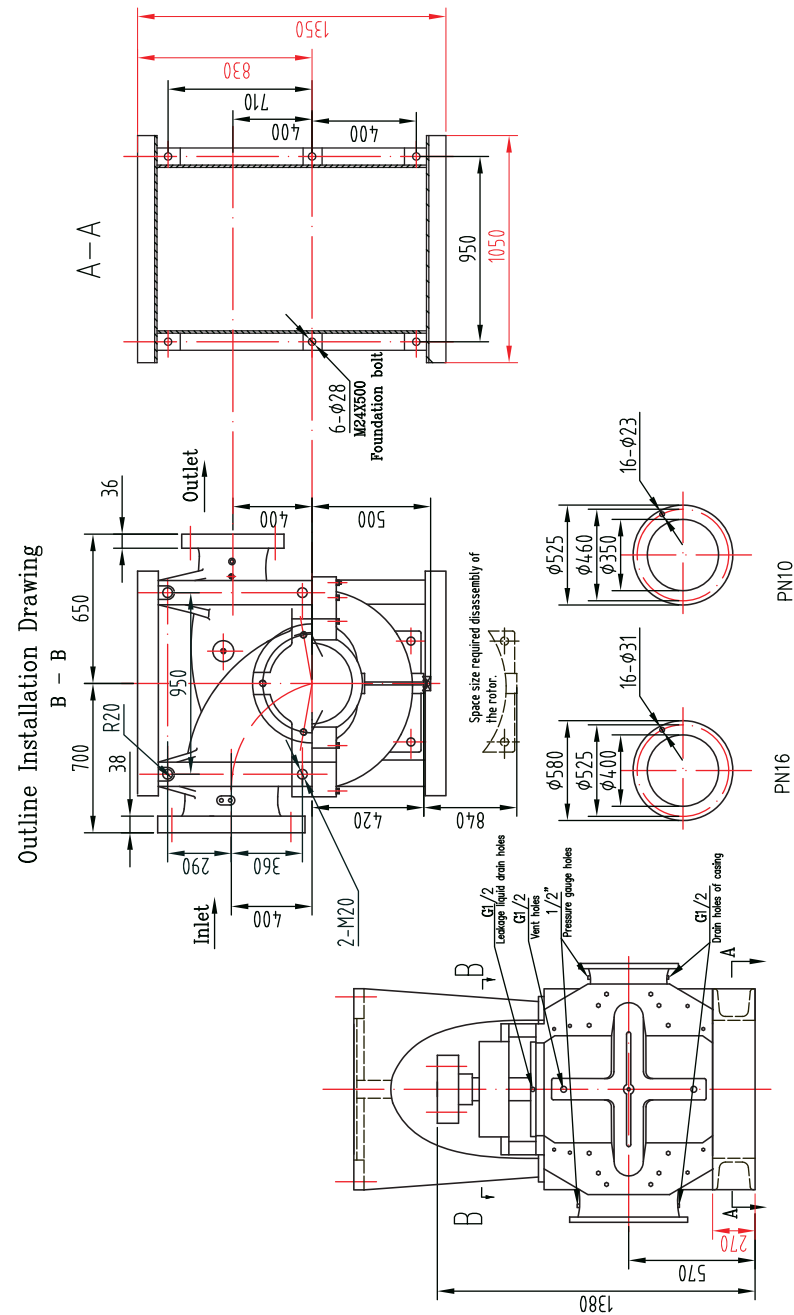
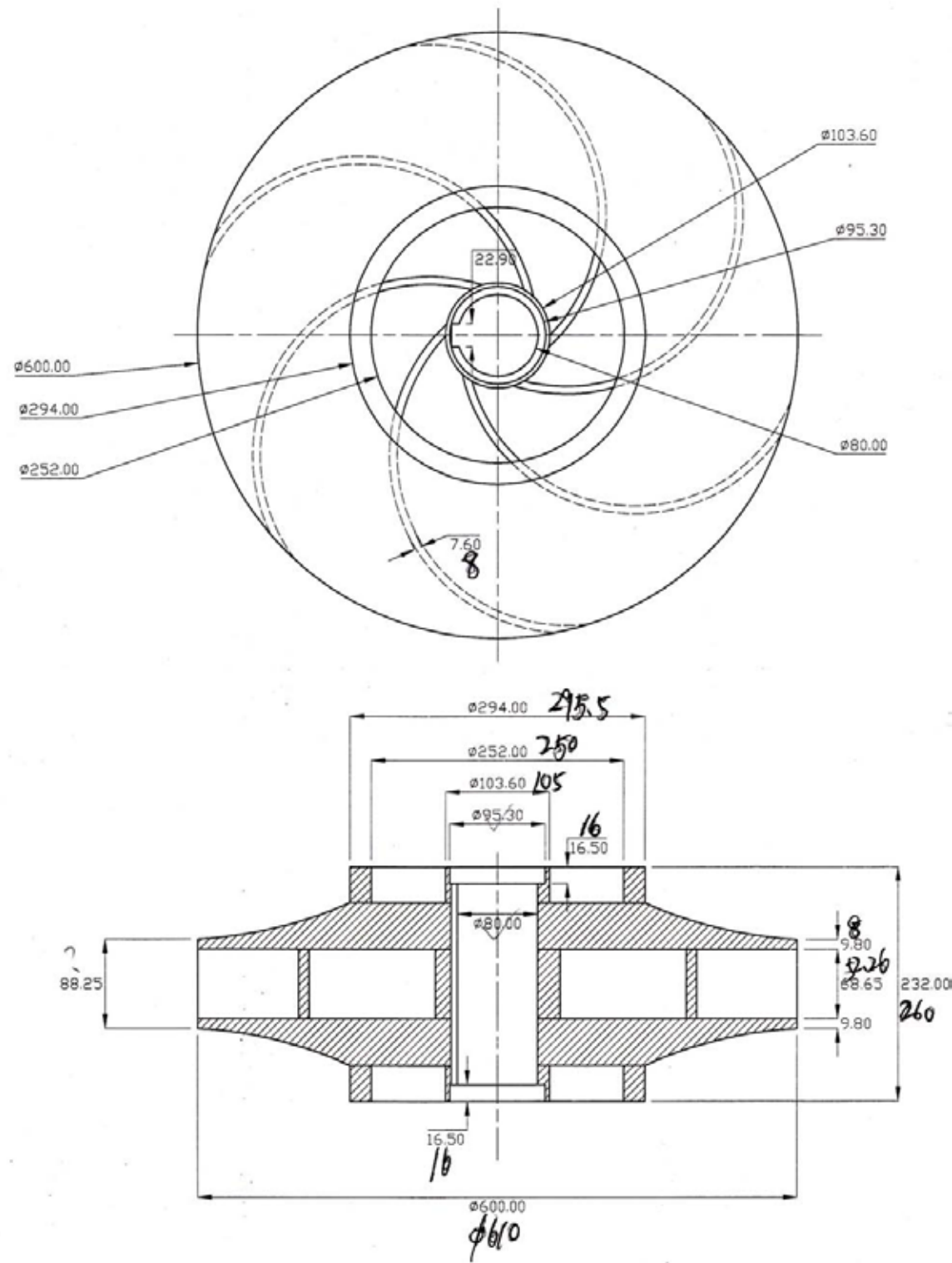
- Carbon steel ASTM1045
 - AISI304
 - AISI316
 - AISI316L
 - Duplex Stainless steel



TTAAE-Split Casing Centrifugal Pump



1	Pump casing	22	Bolts
2	Bolts	23	water slap ring
3	Washer	24	bearing assembly for drive end
4	gasket	25	water slap ring
5	Key	26	key
6	Seal Cover (mechanical seal	27	pump coupling
7	Mechanidal Seal	28	rivets
8	Washer	29	nuts
9	Flushing assembly for mechanical seal	30	bolts
10	Bearing assembly for no drive end	31	nuts
11	Seal Mounted	32	bolts
12	O-ring	33	nameplate
13	sleeve for mechanical seal	34	rivets
14	shaft sleeve for mechnical seal	35	rotation plate
15	O-ring	36	washer
16	wear ring	37	plug
17	impeller	38	bolts
18	key	39	nuts
19	Bolts	40	O-ring
20	Pump casing	41	flushing parts for mechanical seal
21	shaft		



Remark:
1. Rotation: Clockwise looking from the motor side
2. The weight of the pump is 2093kg, the weight of the pump base is 630kg.



TORONTECH™
Pumps and Valves

TTAAE



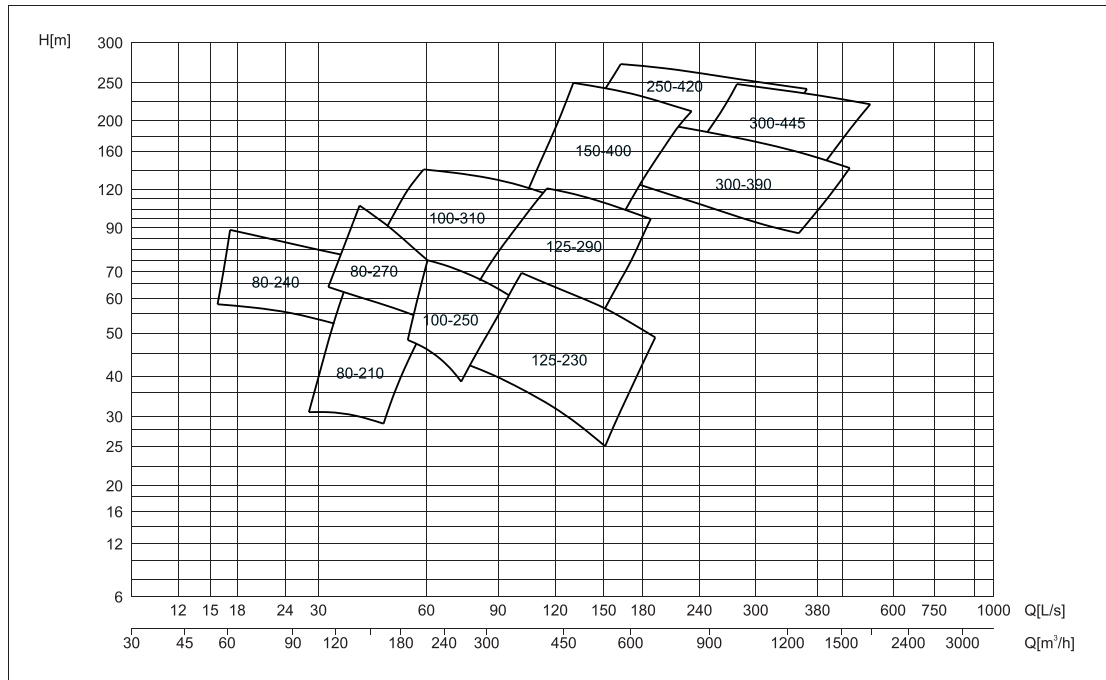
TORONTECH™
Pumps and Valves

TTAAE

TTAAE-Split Casing Centrifugal Pump

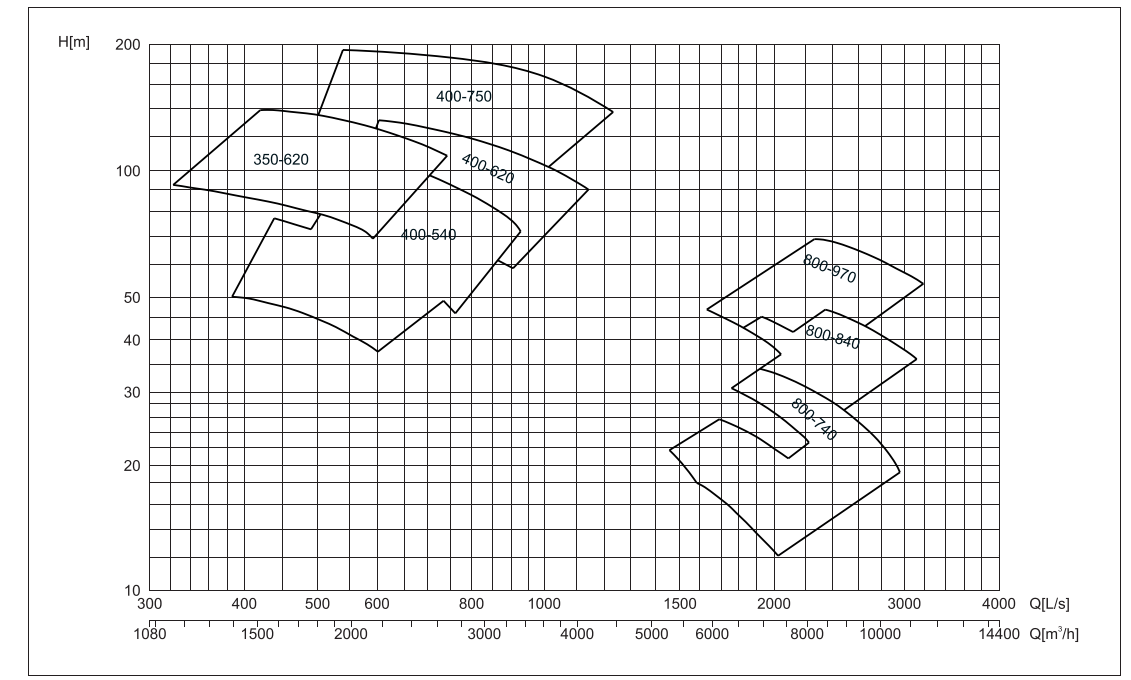
■ Selection Chart (50Hz)

n=2900r/min

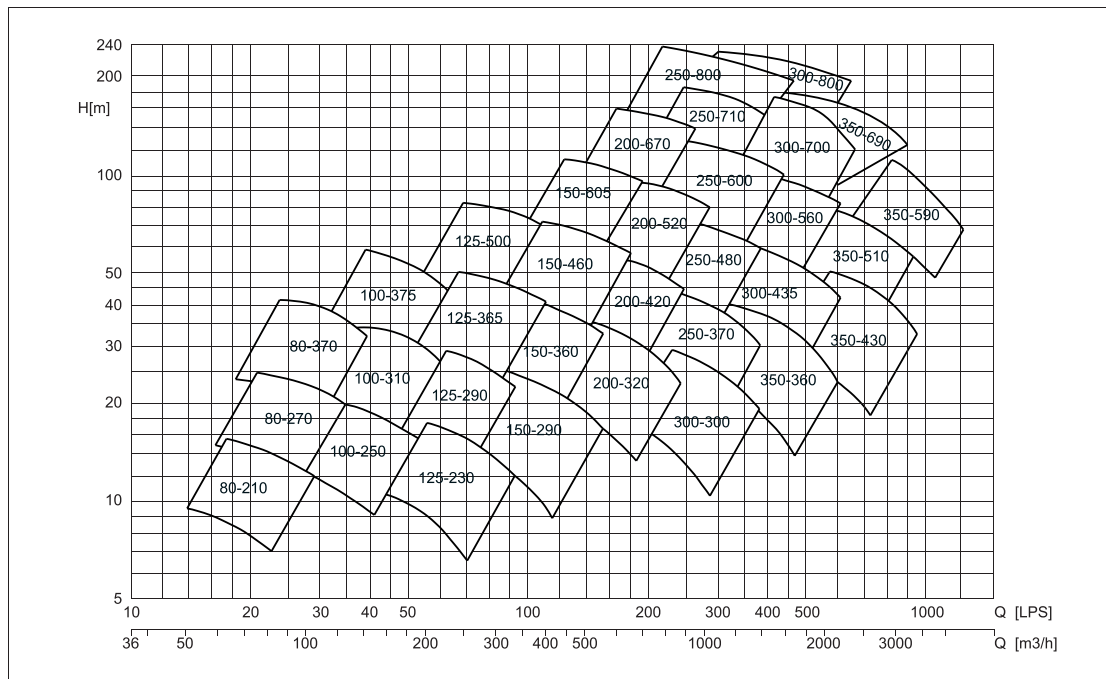


■ Selection Chart (50Hz)

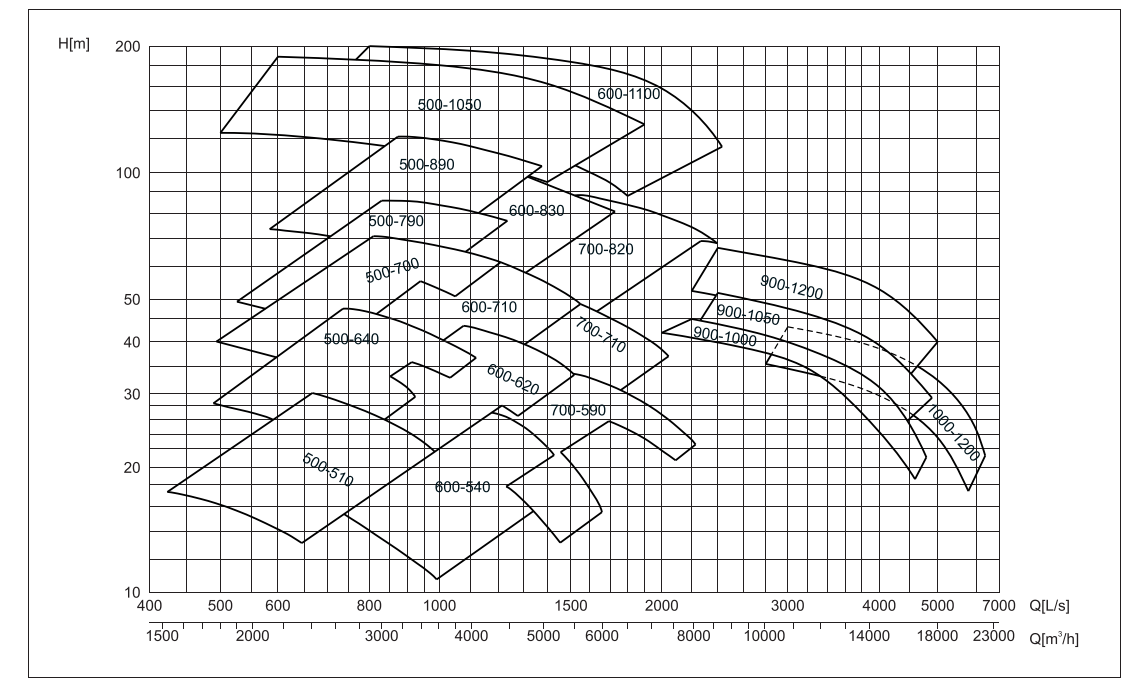
n=1450r/min, 725r/min



n=1450r/min



n=960r/min, 590r/min, 490r/min



Torontech Inc. - Canada
North American Headquarters
Tel: +1.416.368.2721
Fax: +1.416.981.7652
Email: sales@torontech.com
www.Torontech.com

Torontech Inc. - Canada
North American Headquarters
Tel: +1.416.368.2721
Fax: +1.416.981.7652
Email: sales@torontech.com
www.Torontech.com



TORONTECH™
Pumps and Valves

TTAAE



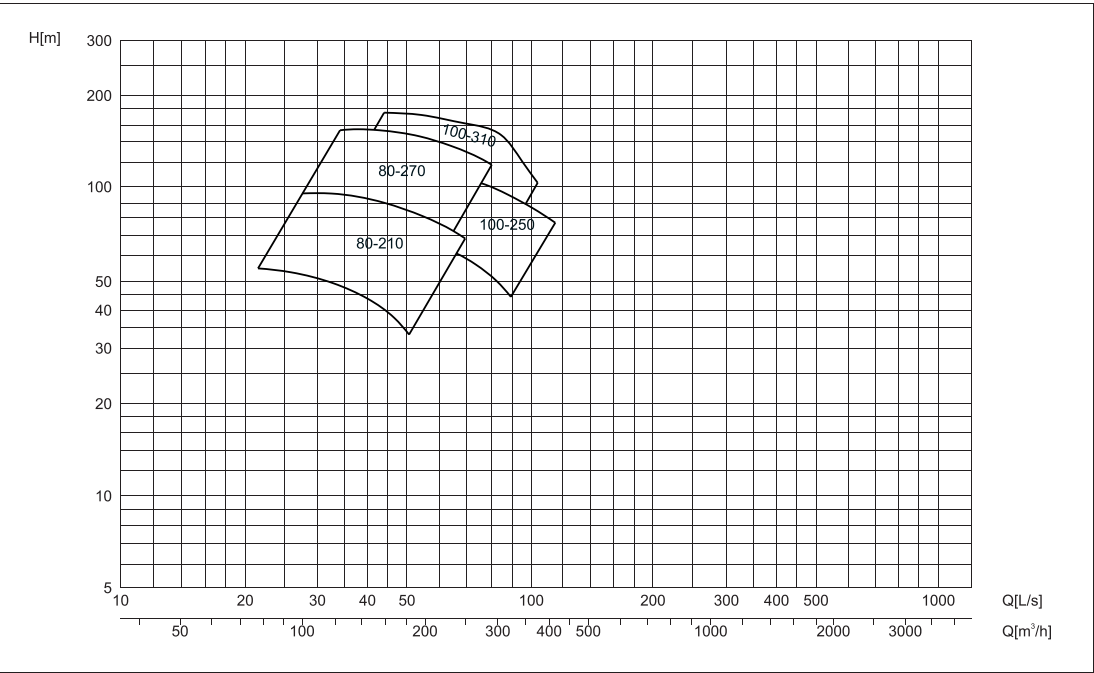
TORONTECH™
Pumps and Valves

TTAAE

TTAAE-Split Casing Centrifugal Pump

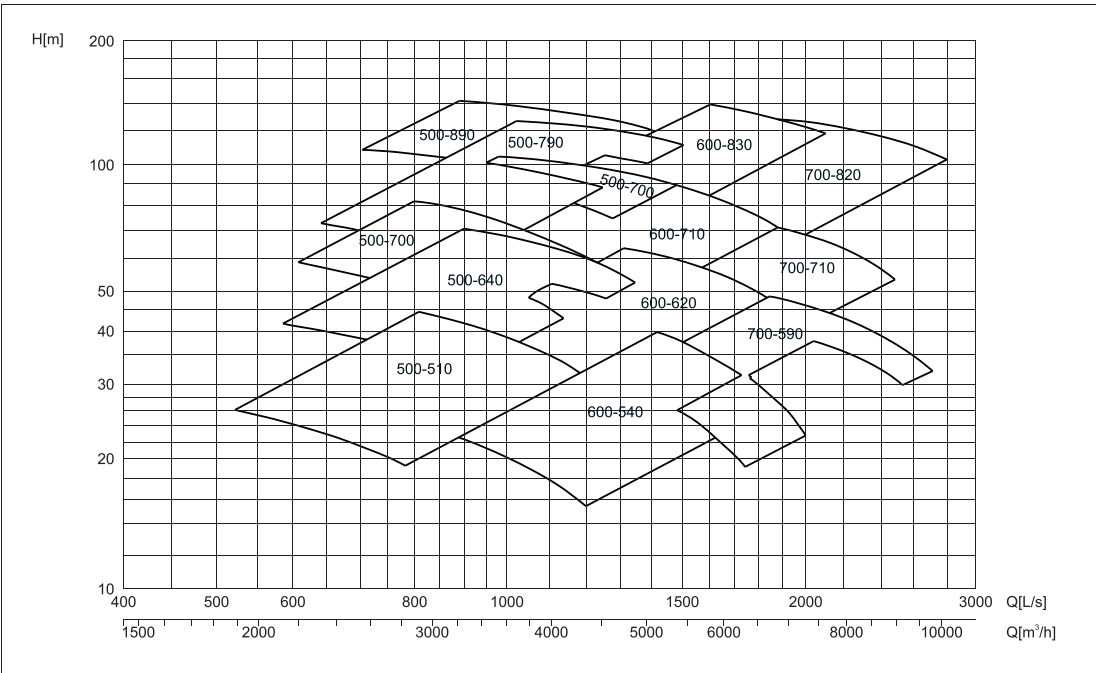
■ Selection Chart (60Hz)

n=3500r/min

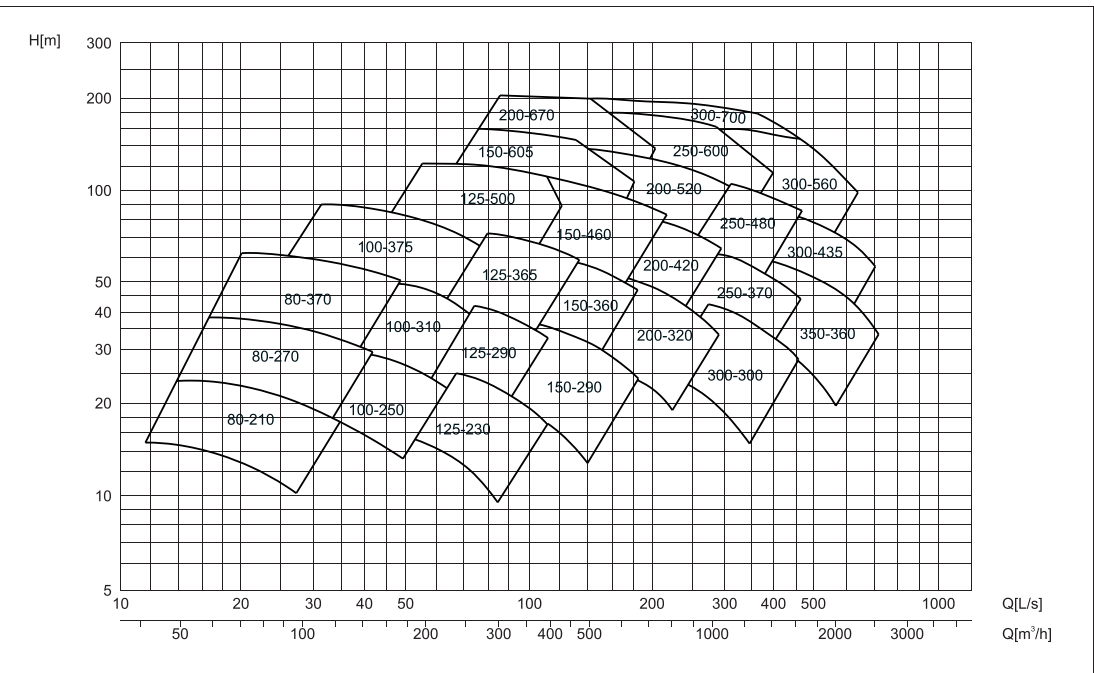


■ Selection Chart (60Hz)

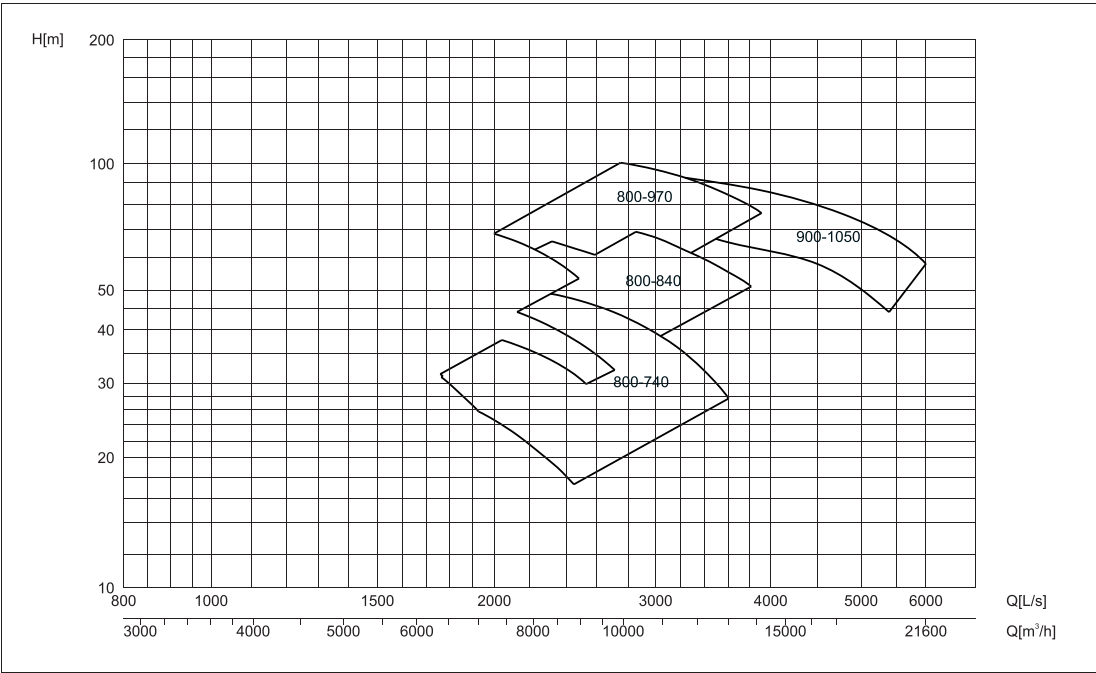
n=1160r/min



n=1750r/min



n=880r/min, 710r/min



Torontech Inc. - Canada
North American Headquarters
Tel: +1.416.368.2721
Fax: +1.416.981.7652
Email: sales@torontech.com
www.Torontech.com

Torontech Inc. - Canada
North American Headquarters
Tel: +1.416.368.2721
Fax: +1.416.981.7652
Email: sales@torontech.com
www.Torontech.com



TORONTECH TM

TorontechTM – North America
TEL: +1 (416) 368-2721
FAX: +1 (416) 981-7652
E-MAIL: sales@Torontech.com
WEB: www.Torontech.com

Please contact us for your nearest local office or distributor